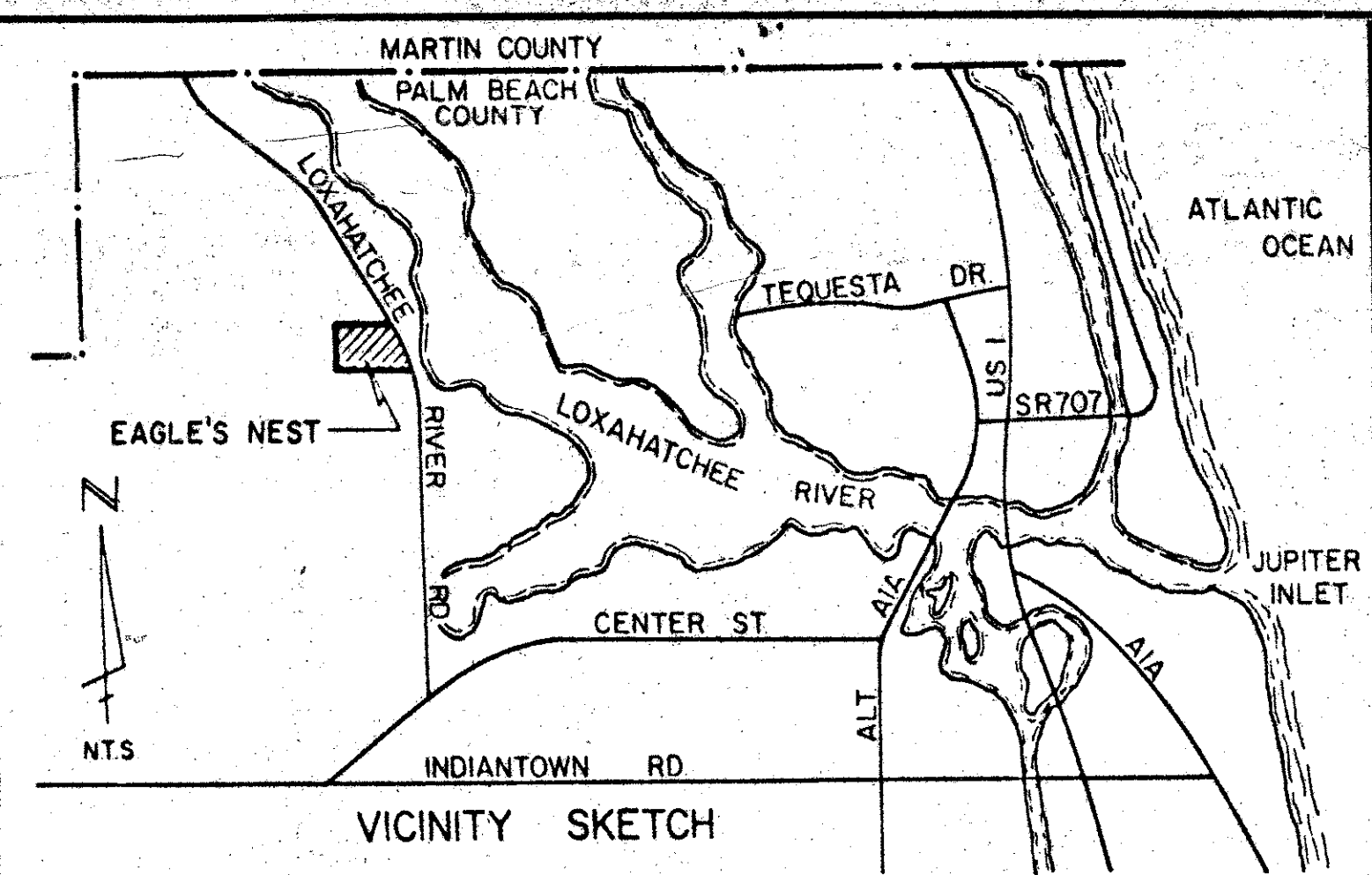


PLAT ONE EAGLE'S NEST

IN SECTION 35, TOWNSHIP 40 SOUTH, RANGE 42 EAST,
PALM BEACH COUNTY, FLORIDA.

SEE BACK



TANGENT DATA

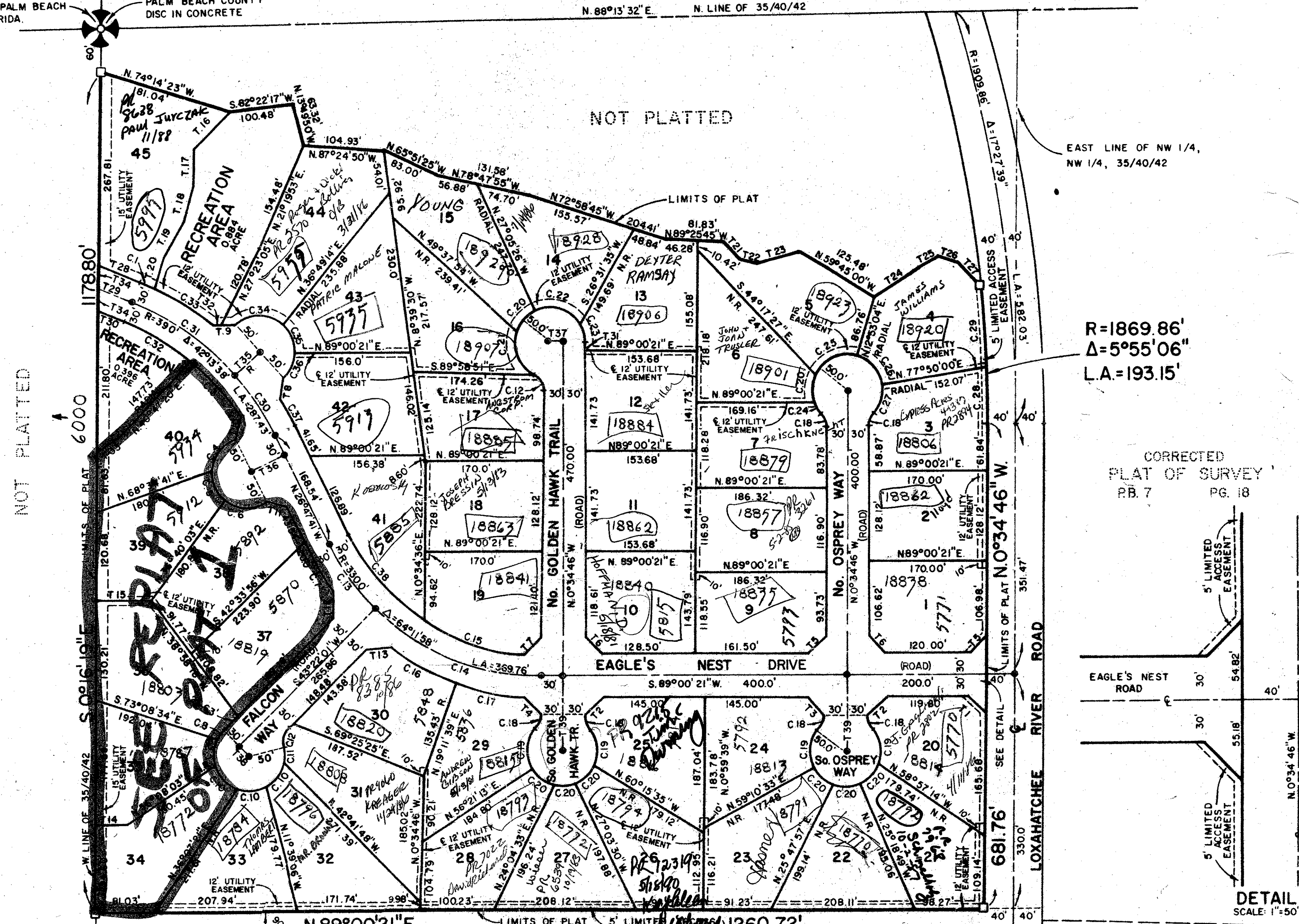
No.	Bearing	Distance
1.	S. 45° 47' 12" E.	35.48'
2.	N. 44° 00' 21" E.	35.36'
3.	S. 45° 59' 39" E.	35.36'
4.	N. 44° 04' 20" W.	35.34'
5.	S. 44° 12' 48" W.	35.23'
6.	S. 45° 47' 12" E.	35.48'
7.	S. 46° 46' 49" W.	36.78'
8.	N. 07° 06' 05" E.	32.24'
9.	N. 87° 23' 54" W.	32.24'
10.	S. 13° 11' 39" W.	36.98'
11.	N. 71° 47' 41" W.	35.36'
12.	S. 2° 28' 25" W.	32.73'
13.	N. 84° 15' 38" E.	32.73'
14.	N. 89° 43' 41" E.	55.00'
15.	N. 89° 43' 41" E.	84.08'
16.	S. 42° 57' 24" W.	68.62'
17.	S. 0° 16' 19" E.	50.00'
18.	S. 14° 18' 08" W.	51.66'
19.	S. 28° 05' 50" W.	56.82'
20.	S. 17° 30' 37" W.	48.52'
21.	N. 42° 53' 05" W.	32.47'
22.	N. 76° 33' 50" W.	23.98'
23.	S. 73° 28' 10" W.	62.14'
24.	S. 53° 45' 15" W.	78.00'
25.	S. 61° 22' 46" W.	29.68'
26.	N. 74° 25' 42" W.	29.91'
27.	N. 46° 53' 50" W.	55.16'
28.	N. 69° 01' 19" W.	61.67'
29.	N. 69° 01' 19" W.	50.00'
30.	N. 69° 01' 19" W.	38.33'
31.	N. 0° 34' 46" W.	12.53'
32.	N. 87° 23' 54" W.	12.78'
33.	N. 63° 03' 17" E.	50.00'
34.	N. 0° 16' 19" W.	32.19'
35.	N. 47° 15' 00" E.	48.63'
36.	S. 63° 12' 19" W.	55.00'
37.	S. 89° 25' 14" W.	20.00'
38.	S. 46° 37' 59" E.	20.00'
39.	N. 0° 59' 39" W.	105.99'

CURVE DATA

No.	Radius	Delta	Length of Curve
1.	420.00'	2° 10' 09"	15.90'
2.	360.00'	14° 42' 25"	92.41'
3.	50.00'	63° 01' 31"	55.00'
4.	50.00'	57° 17' 45"	50.00'
5.	50.00'	57° 21' 56"	50.06'
6.	360.00'	11° 37' 30"	73.04'
7.	50.00'	168° 27' 54"	14.37'
8.	50.00'	51° 33' 58"	45.00'
9.	50.00'	26° 19' 39"	22.98'
10.	25.00'	62° 10' 55"	27.13'
11.	330.00'	19° 50' 18"	114.26'
12.	330.00'	44° 21' 40"	255.50'
13.	300.00'	29° 14' 56"	153.15'
14.	360.00'	15° 57' 35"	100.28'
15.	360.00'	16° 20' 40"	102.69'
16.	25.00'	42° 50' 00"	18.69'
17.	50.00'	65° 47' 51"	37.42'
18.	50.00'	44° 41' 26"	39.00'
19.	50.00'	80° 58' 48"	70.67'
20.	50.00'	85° 01' 58"	74.21'
21.	50.00'	31° 28' 42"	27.47'
22.	50.00'	23° 25' 57"	20.45'
23.	50.00'	78° 10' 27"	68.22'
24.	50.00'	64° 56' 56"	56.68'
25.	50.00'	54° 25' 14"	47.49'
26.	1869.86'	2° 40' 42"	87.41'
27.	1869.86'	3° 14' 24"	105.74'
28.	390.00'	15° 57' 19"	108.60'
29.	390.00'	26° 16' 19"	178.83'
30.	360.00'	19° 48' 39"	124.48'
31.	420.00'	14° 23' 59"	105.56'
32.	50.00'	79° 34' 14"	69.44'
33.	50.00'	54° 35' 34"	47.64'
34.	50.00'	45° 50' 12"	40.00'
35.	420.00'	6° 15' 08"	45.83'
36.	300.00'	29° 49' 09"	156.13'

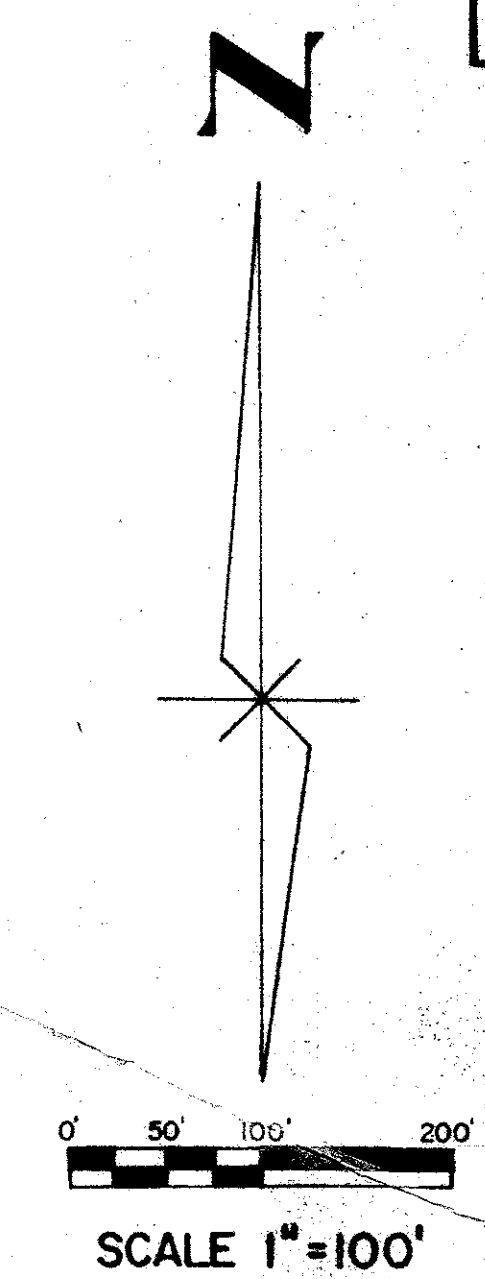
NORTHWEST CORNER
SECTION 35, TOWNSHIP 40 S,
RANGE 42 E., PALM BEACH
COUNTY, FLORIDA.

EXISTING MONUMENT
PALM BEACH COUNTY
DISC IN CONCRETE



R=1869.86'
Δ=5°55'06"
L.A.=193.15'

CORRECTED
PLAT OF SURVEY
PB. 7 PG. 18



NOTES:

- There shall be no buildings or structures placed on public utility easements.
- There shall be no buildings or the planting of trees or shrubs on drainage easements.
- Bearings shown hereon refer to an assumed bearing of South 0° 16' 19" East along the West line of Section 35, Township 40 South, Range 42 East, Palm Beach County, Florida.
- = Denotes Permanent Control Points (P.C.P.)
- = Denotes Permanent Reference Monuments (P.R.M.)
- R = Denotes radial line
- N.R. = Denotes non-radial line

0237-301

2-1 (25)
PLI
Δ50' RS

This instrument was prepared by Craig L. Wallace, at the office of William G. Wallace, Inc., 321 Northlake Blvd., Suite 209, North Palm Beach, Florida 33408.

PLAT ONE		
EAGLE'S NEST		
WILLIAM G. WALLACE, INC. Consulting Engineers & Land Surveyors 321 Northlake Blvd., North Palm Beach, Florida		
FILE NO. K.N.	JOB NO. J78-75	FILE NO. 35-40-42
OFFICE: C.A.W. II	DATE: 4/24/78	LONG NO.: 78-39
CKD: C.L.W.	REF: 73-15	SHEET 2 OF 2

EAGLE'S NEST

35/40/42
35
16